

Future Generations



December 2011 • Creating cleaner energy for future generations



It's in the pipeline

Construction of the 530km Australia Pacific LNG main gas transmission pipeline is on track to commence in early 2012 with government approval announced late September.

The Department of Employment, Economic Development and Innovation (DEEDI) granted Pipeline Petroleum Licence (PPL) 163, providing the green light for this major Project element.

The gas pipeline is the essential link that will transport gas from the CSG gas fields in the Surat Basin to the LNG plant on Curtis Island, off the shore from Gladstone.

The pipeline route begins north of Miles and stretches north through the Banana Shire before turning east towards the coast just north of Gladstone. Two main lateral, smaller diameter pipelines will feed gas from the gas fields to the west and south of the main transmission line's starting point.

The mostly 42 inch (1050mm) diameter pipe will be buried at a minimum of 750mm deep, and deeper under good quality

agricultural land, road and rail crossings and water courses and creeks.

It is expected that construction of Australia Pacific LNG's main gas transmission pipeline will be completed within approximately 24 months.

Australia Pacific LNG has awarded the main pipeline contract to MCJV, a joint venture between Australian companies McConnell Dowell Constructors (Aust) Pty Ltd and Consolidated Contracting Company Australia Pty Ltd.

270,000 tonnes of steel pipe will be needed to construct the pipeline. The contracts for the supply and anti-corrosion coating of the sections of pipe have been awarded and delivery of pipe is due to commence shortly.

Contents

In this issue



Work starts in our latest gas field – Condabri.

2



Second major long-term customer announced.

4



How we are alleviating the impacts of a major project on local housing markets.

8



All your questions answered about CSG production and the Great Artesian Basin.

10



Work starts in Condabri gas field

Early works have just commenced in Australia Pacific LNG's latest gas field, the Condabri gas field.

This field encompasses 45,970 ha from north of Miles to the south-east of the township of Condamine.

It is set to become Australia Pacific LNG's largest and most productive gas field with a capacity of producing 425 Terajoules of gas per day (TJ/d). If provided to a gas fueled power station similar to Origin's Darling Downs Power Station, this is enough gas to produce electricity for more than 1.7 million homes.

The Condabri gas field will be progressively developed over the next 30 years. The first five years will involve the construction and operation of three gas processing plants, one water treatment facility, approximately 447 coal seam gas (CSG) production wells, 380km of water and gas gathering systems and related infrastructure.

The construction of the main facilities will take place on three main sites:

- the Hillview property on the Warrego Highway east of Miles
- the Kooralbyn property off the Leichhardt Highway between Miles and Condamine
- the Ellerslie-Pinehurst property off Kogan Condamine Road, east of Condamine.

Initial activity will be taking place on the Kooralbyn property, with early works underway and worker accommodation facilities being established. Ground works will include cut and fill activities to prepare the site for various infrastructure including a gas processing plant, water treatment plant, permanent worker accommodation facility and temporary storage ponds for treated CSG water.

Civil works and site preparation will continue until large pre-fabricated structural elements begin arriving in July 2012.

Keeping the roads safe

With multiple construction projects taking place, increased amounts of activity can be expected on major highways and local roads around construction sites.

Significant efforts have been made to effectively manage the predicted increases in traffic to maintain community safety and amenity. Comprehensive management plans have been drawn up detailing appropriate truck routes that avoid high density areas wherever possible. Many project deliveries will take place outside of peak road usage times to keep additional and large vehicles off the roads when most motorists are using them.

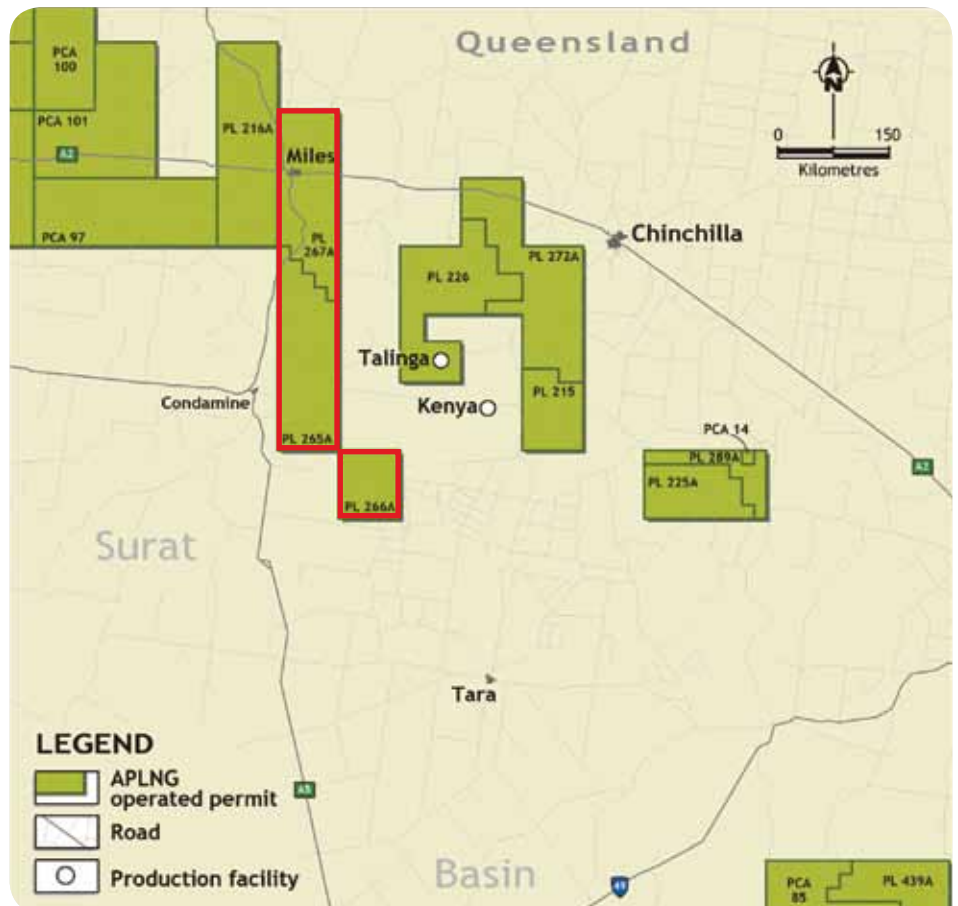
Australia Pacific LNG is committed to working with the local council to help maintain roads during peak construction and undertake road reinstatement once work is complete.

Australia Pacific LNG's Condabri gas field is highlighted below

Fast Fact:



Major improvements have been made to Australia Pacific LNG's gas processing plants which have reduced their environmental footprint. The facilities to be built at Condabri will require approximately 30% of the land area to process the same amount of gas.



Gladstone and Curtis Island Update

Work on Curtis Island is well underway as site preparation for the construction of our LNG facility continues.

ConocoPhillips, as downstream operator of the Australia Pacific LNG Project, has awarded the Engineering, Procurement and Construction contract to Bechtel Corporation. Bechtel are the contractor responsible for the construction of all three approved LNG facilities on Curtis Island.

Since joint venture partners made their Final Investment Decision (FID) announcement Australia Pacific LNG, through Bechtel, has awarded more than 130 subcontracts with many being awarded to Australian businesses. This clearly demonstrates our commitment to supporting local suppliers - we strive to engage local and national business wherever fair and reasonable.

On Curtis Island civil works are underway, clearing has been completed and work continues on erosion and sediment control. It is essential that this work is completed prior to the storm season. Prior to site clearing between 300 and 400 nesting boxes were installed to replace any cleared natural habitat for fauna (for more information see page 12).

Work commenced on Curtis Island in late May and the site preparation work is expected to be completed in approximately 18 months.

Australia Pacific LNG has recently opened its second Gladstone office on Bensted Road. The complex has been designed to hold more than 100 personnel and also provides more than 600 parking spaces for site workers commuting to the Australia Pacific LNG site on Curtis Island.

The decision to have the office away from the town centre was a strategic one, according to Australia Pacific LNG Gladstone Site Manager, Danny O'Dell.

"By developing our office and car park facility north of the Gladstone CBD, we are diverting traffic away from the city, and as of December, we will commence the use of our Fisherman's Landing Platform facility. This will take all Australia Pacific LNG related marine and ferry traffic out of the Gladstone Marina," Mr. O'Dell said.

Dredging works in the Gladstone Harbour are being undertaken by the Gladstone Port Corporation on behalf of all the CSG to LNG proponents.



NATURE WATCH: The Australia Pacific LNG team undertake thorough monitoring of the Curtis Island site.



ACTION STATIONS: Clearing has been completed and civil works continue to prepare the site for the construction of the LNG facility.

Minimising truck movements

Australia Pacific LNG has constructed a rail siding at Callide that will remove the need for 10,000 heavy vehicle movements from Gladstone roads and the surrounding traffic corridor when Project pipe delivery begins in January 2012.

The rail siding is a 730m looped track, separate from the main line, where trains are parked and pipe is unloaded to the adjacent stockpile. Sections of pipe will be unloaded from ships at Auckland Point wharf in Gladstone directly onto trains and then transported to Callide, eliminating the need for trucks to transport the pipes through metropolitan roads and on highways.



Second major LNG sales deal announced

Australia Pacific LNG has secured its second major long-term customer, with a contract for the supply of one million tonnes of LNG per year for 20 years signed with Japan's The Kansai Electric Power Company on 17 November.

This sale agreement follows the momentous contract signed with China Petroleum & Chemical Corporation (Sinopec) for 4.3 million tonnes of LNG per year, the largest single LNG sales agreement by annual volume ever signed

for delivery from Australia. At this time Sinopec also became an equity partner in the Project - Origin (42.5%), ConocoPhillips (42.5%) and Sinopec (15%), with first production on target for 2015.

In August, joint venture partners and major investors announced the Final Investment Decision (FID) for the Project. This announcement initiated development of the first phase of the two gas production train CSG to LNG project. The first phase commits US\$14 billion to the development of the first 4.5 million tonne per year train



IT'S A DEAL: Australia Pacific LNG Chairman and Origin Managing Director Grant King with Kansai Electric Managing Director Yoichi Mukae (shaking hands) and Ryan Lance, Vice President Exploration and Production, of ConocoPhillips.

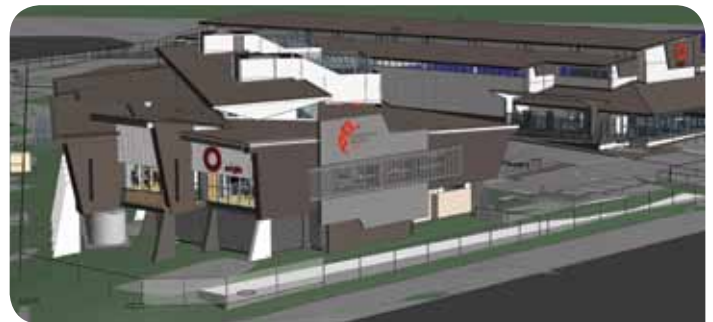
and infrastructure to support a second train. The full two train project will total US\$20 million.

Roma Operations Hub

Origin, the Upstream operator for Australia Pacific LNG, will soon have a new home in Roma with the approval of a new \$18 million central operations hub.

The state-of-the-art facility will house production operations, administration, logistics and stores, drilling operations and accommodate up to 80 employees. It will also act as a control centre for Queensland, coordinating all of Origin's people, equipment and activity across the gas fields.

This facility represents Australia Pacific LNG's commitment to long-term investment in the region and will provide an ongoing source of indirect employment opportunities for local businesses.



OPS HUB: Construction of the new facility on the corner of Billy Bob Way and Lindsay Court is due to commence mid 2012

Gladstone Community Information Centre



Visit the Gladstone Community Information Centre at 84 Goondoon Street and find out all you need to know about the Project



In the community

Australia Pacific LNG values being an active member of the communities in which we operate. We believe that through our major project we have the opportunity to leave a lasting legacy and improve the day-to-day lives of people living in our Project areas.

We have a Community Investment Strategy that maps out a comprehensive investment plan to support and boost the social infrastructure and services in the community.

The strategy includes:

- Social infrastructure investment,
- Partnership funding,
- Sponsorships,
- Donations,
- Volunteering, and
- Matched giving.



EXPANDED PLAYSPACE: Staff and students at Chinchilla Community Kindergarten celebrate Australia Pacific LNG's donation of \$400,000 towards the relocation and construction of an expanded facility.

Some of Australia Pacific LNG's recent social initiatives include:

➔ \$1 million funding committed to the Maranoa Regional Council for the Roma airport redevelopment

➔ Provision of funding for a full-time Housing Support case worker to work with the Chinchilla Family Support Centre and Murilla Community Centre in Miles to support people having trouble navigating the competitive rental markets

➔ \$75,000 to the Maranoa Child Friendly Communities Steering Committee to provide a mobile parenting van for families and visitors to the region

➔ Participation in an LNG industry donation of \$10.5 million for the Gladstone airport upgrade

➔ Resourcing a Technical Officer to work in the Western Downs Regional Council to help process housing development applications (DA) and enable the local housing markets to work more effectively and clearing the current DA backlog

➔ Contribution of \$5 million to the development of the Gladstone Foundation to provide social infrastructure in the region

➔ Installation of a solar power unit at the Wandoan Meals on Wheels to help reduce their costs and lower their environmental footprint

➔ Provision of a two year school-based traineeships to two local Indigenous high school students



Australia Pacific LNG's Robert Gibb and Suzanne Schlute with Cr Craig Butler and Michelle Butler in front of *I'm a Widow Choice* by Laurie Nilsen (2008)

Gladstone enjoys Indigenous art exhibit

The people of Gladstone were able to experience the spectacle of the Australian Museum's Menagerie Contemporary Indigenous Sculpture throughout September and October with the help of the Australia Pacific LNG Project.

The Project helped bring the eclectic collection to Gladstone for display at the Gladstone Regional Art Gallery.

The exhibit showcases the richness and breadth of contemporary Indigenous sculpture in Australia, featuring 33 artists representing every State and Territory and includes 52 unique works sharing their cultural knowledge and connections to country.

Community spirit alive and well

Commitment to local communities is also evident through the individual donations of Australia Pacific LNG staff members. Recently staff working on the main gas transmission pipeline helped raise more than \$9,000 for the Rural Fire Service.

The Rural Fire Service is a volunteer arm of the Queensland Fire and Rescue Service and does an excellent job in protecting local communities.

The money raised will go towards the purchase of essential fire-fighting equipment and will mean that volunteers will be able to spend more time with their families as opposed to spending time fund raising.



Mark Burrows from MCJV and Adrian Lang and Graeme Hogarth from Origin present QLD Fire and Rescue Service Director Rural Operations, Chief Superintendant Ewan Cayzer with the monies raised by the Pipelines Team.

Regional Community Consultative Committees

In order to discuss and address social issues within the Project area, Australia Pacific LNG has established Regional Community Consultative Committees (RCCC) in all regional council areas in which we operate, some jointly with other CSG to LNG proponents.

The Committees are designed to act as ideas generators to encourage improvements in Australia Pacific LNG meeting its social and community commitments.

Locals are encouraged to raise social issues as agenda items for discussion, and provide recommendations for improvement.

After only one meeting, the Western Downs Committee made progress in tackling important local issues such as access to affordable housing. Based on the Committee's suggestions, Australia Pacific LNG is now funding a new development officer role within the Western Downs Council to speed up development applications and boost housing stock.

Visit www.aplng.com.au to find out more about your local RCCC.

Upcoming meetings



Joint Maranoa RCCC – Thursday 15 March 2012

Western Downs RCCC – Thursday 8 December 2011 & Thursday 8 March 2012

Gladstone RCCC – Tuesday 14 February & Tuesday 17 April 2012

Pipelines RCCC – Monday 13 February and Monday 16 April 2012

If you would like to make a suggestion or raise a social issue affecting your area as an agenda item at an upcoming meeting please email contact@aplng.com.au (in the gas fields and along the pipeline route) or APLNG.gladstone@conocophillips.com (for Gladstone and Curtis Island).

Out and about

2011 winners of Upstream operator Origin's Community Skills Scholarships were recognised at a presentation ceremony in Miles in August - each winner receives \$13,500 to help support them through their local apprenticeship.



Clinton Smith, Roma



Stephanie Robinson, Miles



Ryan Jiggins, Dalby



Matthew Erb, Chinchilla



Lykera Jang, Chinchilla

The Australia Pacific LNG Pipelines team help celebrate the Dawson River festival in Theodore, October 2011.



Sustainable housing

Housing - its availability and cost is an issue for any major project developing in a regional community.

Australia Pacific LNG is determined to work to alleviate the impacts of our Project on the housing market in terms of access and affordability.

In Gladstone the issues around housing and accommodation are amplified with three major LNG facilities currently under construction and other industrial growth in the region. Australia Pacific LNG, the latest major Project to receive approval and FID will soon be presenting its Integrated Housing Strategy to the local council. This creative strategy will include elements such as increasing housing supply for Project staff, provision of accommodation support for emergency services personnel within the community, affordable housing and rental assistance for surrounding communities.

In the Surat and Bowen Basins Australia Pacific LNG has worked hard to develop strategies that will best suit these communities in terms of alleviating the



impacts of our Project on the housing market in terms of access and affordability.

In these regions, our project team believes that it will take more than cash or building new houses to solve the issues. To find the best solutions we need to understand the existing market and our possible impact on it in the short, medium and long term. We are dedicated to getting the housing market to work well in the long term and to lessen any short term impacts.

Our peak construction workforce in the gas fields is expected to reach about 2000 but those numbers are not permanent. If we were to simply build houses in this period, it would inflate an already inflated market. It could also create a housing glut and reduce the value of homeowners' assets.

What we can do is work with community and not-for-profit organisations to help develop affordable housing.

In the short term the main impact will be rental stress as a result of investors who see the new workers and are keen to increase their return.

To counter this we are providing funding for staff to work in local organisations to support people in rental stress for the transitional period. This program aims to help people find sustainable rental accommodation in the private housing market and not build welfare dependency. We have also provided funding for an officer to work in local council to help clear a backlog of development applications.



Meet Mari-Anne Bonventi, Regional Supplier Liaison Officer

Mari-Anne has joined the team to act as an interface between potential regional suppliers and the CSG to LNG project. She will be based in Origin's Roma office.

If you have any enquiries around supplying goods and services to the Australia Pacific LNG Project please contact Mari-Anne on mari-anne.bonventi@originenergy.com.au.

A 'rockin' display

A large display of rock drilled from the entire depth of the Surat Basin has been exhibited at the nation's capital and throughout the gas fields in order to help people understand more about CSG production and the potential impacts on groundwater.

The display of more than 1000 metres of rock, known as core, has been presented to national politicians, media and senior public servants in Canberra and landholders, business owners, school students and interested community members in Miles, Chinchilla, Roma and Brisbane.

The core displays underground rock formations including the sandstone layers known as aquifers typically accessed for agricultural and stock use; the underground coal formations where CSG is present; and the dense mud and siltstone



HARD CORE: The rock samples exhibited represent the entire depth of the Surat Basin.

layers known as aquitards that separate and limit the movement of groundwater between the various layers.

Hydrogeology experts provided guided tours through the core answering questions about CSG and groundwater.

Workshops for local suppliers

To give local businesses the best chance at successfully securing contracts with major projects, including our Project, we have been running a series of tendering workshops for local suppliers.

These hands-on workshops have been designed to provide essential information about the steps companies would need to take to make their business sought-after in the competitive marketplace.

To date we have conducted workshops on 'Safety', 'How to complete an effective capability statement' and 'How to identify your position in a Supply Chain'.

We are committed to supporting sustainable communities and that includes sourcing goods, supplies and services from local business whenever it's viable and supporting local suppliers throughout the region, state and country.

Visit the Australia Pacific LNG website to find out the details of the next workshop and how you can register your interest in becoming a supplier to the Project.



TENDERING TIPS: Local suppliers learn how to make the most of tendering opportunities at Australia Pacific LNG's procurement roadshows.

Construction Skills Queensland

Keen to find qualified and skilled workers, the Australia Pacific LNG Project through upstream operator Origin, has formed a strategic alliance with Construction Skills Queensland (CSQ) to build the 6,000 strong workforce required for the construction phase of our CSG to LNG project.

As part of the alliance, CSQ will fund

a position within Australia Pacific LNG to work with its contractors during the construction phase to ensure there are people with the skills needed to complete the Project.

By proactively working together, Australia Pacific LNG and CSQ can help to address skills shortages and ensure that Queensland has the capacity to meet this demand now and into the future.

Jobs Expo

Australia Pacific LNG is looking for local talent to join the Project and upstream operator Origin has been exhibiting at a series of Mining and Gas Jobs Expos to find them.

The expos, aimed at promoting job opportunities in the resources sector, were held across Queensland in areas like the Gold Coast, Sunshine Coast, Fraser Coast, Cairns and the Whitsundays throughout October and November.

Hosted by the Queensland Government, in partnership with regional councils and major resource industry employers, the



Origin participated at Jobs Expos around Queensland

expos provided information sessions to jobseekers with insights into the key sectors of the resources industry where employment opportunities are available – mining, construction, and energy and gas.

Bechtel announces 400 apprentices

Bechtel, the Engineering, Procurement and Construction contractor for the LNG Facility in Gladstone, announced one of the largest adult apprenticeship intakes in Australian history in November.

To support construction of the three approved LNG facilities on Curtis Island, including the Australia Pacific LNG facility, Bechtel will hire an unprecedented 400 apprentices.

Under the program adults with uncompleted apprenticeships, or those working in allied industries without a trade qualification, will have the chance to complete an apprenticeship in a reduced amount of time – 18 months instead of the traditional four years.

This intake of apprentices will bolster the amount of qualified skilled workers in the region.



CSG production and the Great Artesian Basin

What is the GAB?

The GAB is one of the largest artesian groundwater basins in the world. It lies under more than 22% of Australia spanning Queensland, New South Wales, South Australia and parts of Northern Territory.

It comprises many different geological layers including sandstone aquifers and mudstone and siltstone aquitards, one on top of the other. Aquifers are permeable layers of rock that allow water to flow through them easily. Aquitards are relatively impermeable and do not allow water to pass through them freely.

The GAB has a total groundwater storage of 65,000 million ML (mega litres), and is estimated to refill at a rate of 900,000 ML each year.

What are the concerns about impact of CSG operations on the GAB?

Some people claim that CSG production will extract so much water from the GAB that it will reduce supplies and have unknown flow-on effects on the broader environment.

Others believe that depressurisation of the coal seams will cause water from other aquifers to flow into the coal seams,

resulting either in contamination with salty water or lowered water levels.

Will CSG impact the GAB?

It is important to note that CSG production does not directly extract water from the aquifers most commonly used by landholders. Water is extracted from the geological layers that contain the coal seams (the Walloon Coal Measures in the Surat Basin).

Australia Pacific LNG has completed extensive computer modeling, based on research, monitoring and experience producing CSG for the last 15 years and the results show that the aquifers most commonly used by landholders will not be significantly impacted. Where local impacts do occur they can be effectively managed.

The water flow in aquifers is very slow (generally 1-5 metres per year under natural conditions) and any effects should be identified through our monitoring programs in time to mitigate them.

The peak of CSG annual water extraction (in approximately 10 years' time) is estimated to be less than 0.0002% of total GAB storage – the equivalent of removing five litres of water from an Olympic-sized swimming pool.



How much of the GAB do Australia Pacific LNG's operations occupy?

Our Project areas are found in the Surat and Bowen Basins, which are sub basins of the GAB. The Project areas only occupy a very small portion of the GAB.

What are we doing to monitor our impact?

Australia Pacific LNG conducts comprehensive groundwater monitoring throughout all areas of our operation. By law CSG companies are required to undertake baseline groundwater bore surveys and install monitoring bores around their activities.

Australia Pacific LNG undertakes monitoring at landholder bores and at more than 80 specially installed monitoring bores.

The baseline groundwater bore surveys provide invaluable information about water levels and quality prior to CSG production taking place. This information will provide a baseline to compare future data to.

What are we doing with our CSG water – will it impact the GAB?

Australia Pacific has invested significantly to treat our CSG water via reverse osmosis, which removes dissolved salts and impurities. The resulting clean, pure water is then suitable for many uses.

Australia Pacific LNG is investigating options to use treated CSG water for irrigation, commercial supply, construction, and to increase water flows in local watercourses. We are also undertaking trials of aquifer injection, which involves pumping CSG water back into aquifers, which could provide benefits for other groundwater users.

We also continue to investigate options to provide water to landowners.



New drilling rigs reduce landowner impact

Innovative new drilling equipment recently working at our Talinga development is not only boosting safety and efficiency but also reducing the potential impact on landowners and their property.

The hybrid drilling rigs employ a unique flexible coil allowing continuous drilling without the physical reconnections of steel pipe in conventional drilling. The result is a

faster turn around time, increased safety for staff and less land disturbance.

This is the first time the purpose built rigs have been used in Australia and have been deployed following a two year study by Australia Pacific LNG into global drilling best practice. These rigs will be used to drill many of the wells required for the Project.



Surveying the health of waterways

Australia Pacific LNG Water Solutions team members undertake valuable aquatic ecology monitoring of water courses throughout our Project area. Here the team is measuring the health of the Condamine River and the creatures that live in it, in particular where treated CSG water is released from the Talinga Water Treatment Facility.

Using CSG water for irrigation

Treated CSG water will soon be used to irrigate broad acre crops and support grazing activities on an 1100 hectare property south-west of Chinchilla.



Australia Pacific LNG is set to establish an intensive irrigation operation on the recently acquired Monreagh property with 300 hectares of centre pivot and drip irrigation infrastructure.

We are committed to finding the best use for treated CSG water, and the irrigation of crops is one sustainable method we are investigating. We are also striving to maintain the productivity of purchased land through ongoing farming and cropping activities.

Monreagh will also be developed to include 12 producing CSG wells and will demonstrate how an intensive irrigation property can co-exist with the CSG industry.

Australia Pacific LNG also uses treated CSG water to irrigate a crop of sustainable pongamia plants at our Spring Gully gas field.

And the award goes to...

Australia Pacific LNG and WorleyParsons have won recognition for the Environmental Impact Statement (EIS) prepared for the Australia Pacific LNG Project at the recent Queensland Engineering Excellence Awards.

The Project won the award for the Reports, Procedures and Systems category of the awards hosted by Engineers Australia Queensland Division in Brisbane on 7 October.

The Australia Pacific LNG EIS assembled more than 200 technical experts from around Australia and the world to undertake the environmental, socio-economic and engineering studies.

Protecting wildlife on Curtis Island

In order to minimise disruption to, and protect, native wildlife during site clearing and early works for the LNG facility on Curtis Island, Australia Pacific LNG has created a safe zone for fauna outside of the construction area.

Between 300 and 400 nesting boxes have been installed to replace the hollows in cleared trees and significant hollow logs relocated out of cleared areas to ensure that natural nesting areas are still available. Each box is between four and six metres off the ground and the sizes vary to suit different animals and birds.

Species found to live in the area include the red-tailed black cockatoo, white-bellied sea-eagle, the white-throated honeyeater, eastern grey kangaroo, common tree snake and freckled monitor.



The Australia Pacific LNG Project

Australia Pacific LNG is the leading coal seam gas (CSG) producer in the Queensland natural gas industry.

The joint venture between Origin, ConocoPhillips and Sinopec is currently undertaking a major CSG to liquefied natural gas (LNG) project that will supply natural gas to both the domestic and international markets. The Australia Pacific LNG Project involves developing CSG fields in the Surat and Bowen Basins, construction of a 530 km pipeline and a new LNG facility on Curtis Island, off shore from Gladstone.

CSG is a cleaner and greener alternative to many currently used fossil fuels, such as coal and petroleum. Power stations fired by CSG emit around half the greenhouse gases of coalfired electricity generation and use only a fraction of the water.

CSG is emerging as a preferred transition energy source as the world develops its renewable energy capacity. The CSG industry is set to provide Queensland and Australia with huge economic benefits.

Stay safe on the roads this Christmas

Australia Pacific LNG wants everyone living in our Project area to have a happy and safe Christmas break this year and we would like to encourage motorists to drive safely and take regular rest stops while driving.

Christmas and New Year is always a busy time on the roads and we want everyone to play it safe, especially with extra traffic on the road.

Australia Pacific LNG is committed to promoting safe driving through our Caring about Road Safety (CARS) program and this year our message is simple "Make safety your top priority and take regular rest stops on long haul trips."

Merry Christmas.



For more information

Got a question about Australia Pacific LNG?

For enquiries about the gas fields or pipeline call **1800 526 369** or email contact@aplng.com.au

For enquiries about the Gladstone operations and LNG facility call **1300 776 205** or email aplng.gladstone@conocophillips.com

Or visit our website at www.aplng.com.au