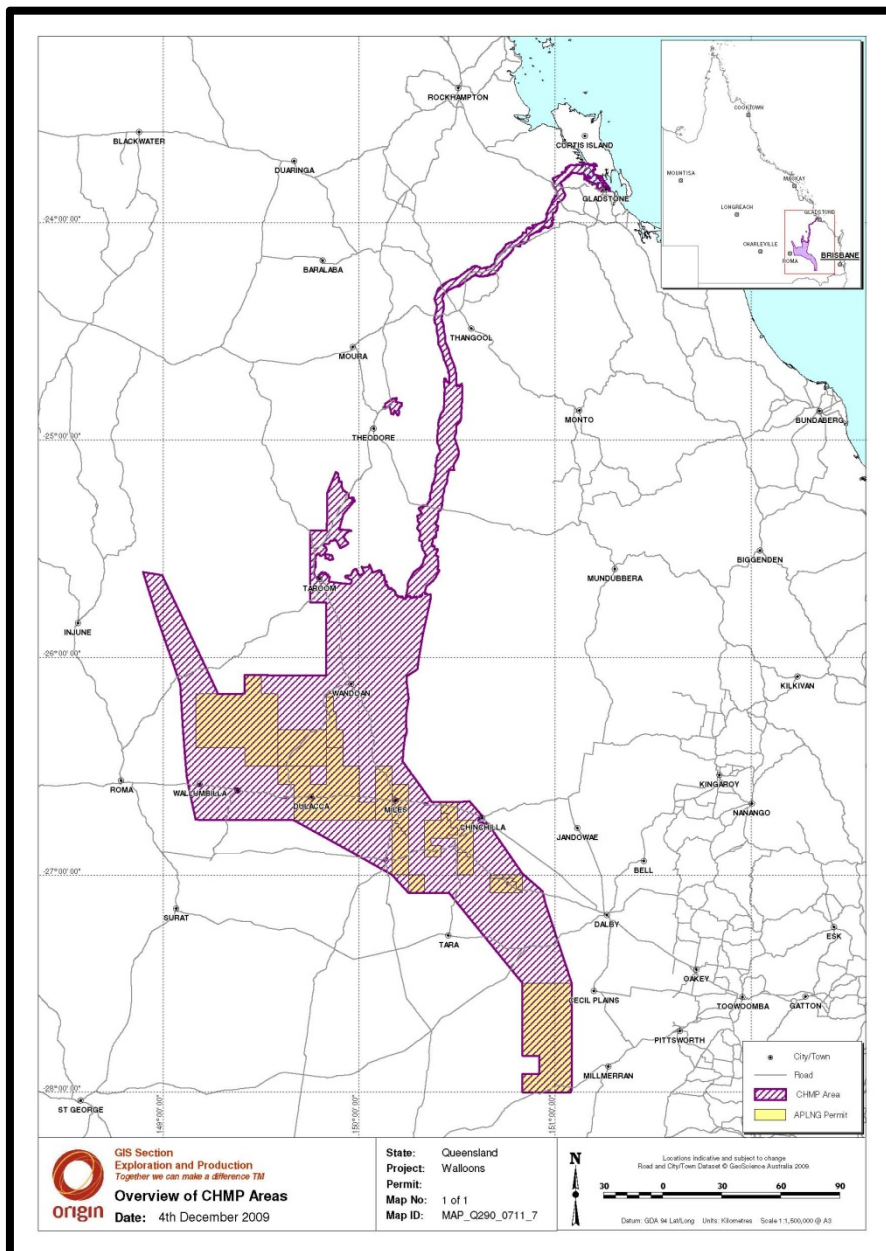


# Important information on Australia Pacific LNG Cultural Heritage Management Plans

It is important that you realise that just because you have received a letter from Australia Pacific LNG in relation to the development of a Cultural Heritage Management Plan (**CHMP**) does not mean your property will be affected by this Project.

A Cultural Heritage Management Plan (**CHMP**) is a document, developed by the proponent of a project and the relevant Aboriginal party for the area of the project that sets out agreed procedures for managing the impacts of the project development on Aboriginal cultural heritage in areas directly affected by project activities.

The CHMP notices issued for the Project cover the area being investigated for the Project Environmental Impact Statement, as indicated on the map below, including areas outside of existing petroleum authorities.



## How to contact petroleum authorities

There are many different types of petroleum authorities. The Queensland Government has specific information capturing all petroleum authorities held over land within the State. If you are not already aware of whether your land is covered by a petroleum authority we recommend you view the State Government website:

[www.dme.qld.gov.au/mines/tenure\\_maps.cfm](http://www.dme.qld.gov.au/mines/tenure_maps.cfm)

Or for more information, including frequently asked questions, visit

[www.origintogether.com/your-questions/](http://www.origintogether.com/your-questions/)

\*\*\*\*\*

## Frequently Asked Questions

### **Q: What is a Cultural Heritage Management Plan?**

A: A Cultural Heritage Management Plan is undertaken by proponents such as Australia Pacific LNG to assess any potential impact on Aboriginal cultural heritage by any projected work associated with a project.

### **Q: If I received a letter relating to the Australia Pacific LNG Cultural Heritage Management Plan does it mean there will be works by APLNG on my property?**

A: No. The Cultural heritage Management Plan notices cover a larger area than the area that will be covered by the final proposed works associated with the Australia Pacific LNG Project.

### **Q: Is my land covered by a petroleum authority?**

A: There are many different types of petroleum authority. The Queensland Government has specific information capturing all petroleum authorities held over land within the state. If you are not already aware of whether your land is covered by a petroleum authority we recommend you view the state Government website:

[www.dme.qld.gov.au/mines/tenure\\_maps.cfm](http://www.dme.qld.gov.au/mines/tenure_maps.cfm)

Or contact the Department of Employment, Economic Development and Innovation directly as follows:

## Queensland Mines and Energy

### **General Enquiries:**

Freecall: **1800 657 567** (toll-free within Australia)

Phone: +61 7 3898 0375

Fax: +61 7 3238 3088

Email Queensland Mines and Energy (QME) with your questions or feedback using the [online enquiry form](#) or send your email to [info@dme.qld.gov.au](mailto:info@dme.qld.gov.au)

Remember, just because you are not in the area of an Australia Pacific LNG petroleum authority does not mean you may not be in the area of a petroleum authority held by another company. Make sure you check the available information to find out.

**Q: What is Australia Pacific LNG?**

A: Australia Pacific LNG is a 50:50 joint venture between Origin and ConocoPhillips where Origin is the operator and developer of the gas fields and associated pipelines, and the pipeline from the Surat and Bowen Basins to Gladstone and ConocoPhillips is the developer of the coal seam gas (CSG) to liquefied natural gas (LNG) plant on Curtis Island off Gladstone. You can view information on the Project at Australia Pacific LNG's website: [www.aplng.com.au](http://www.aplng.com.au) or [www.origintogether.com](http://www.origintogether.com)

**Q: Will Australia Pacific LNG contact me if they are going to do any work on my land?**

A: Yes. APLNG will not undertake any work on your land without first contacting you, no matter how minor.

Recently, information sessions were held in Cecil Plains, Millmerran, Miles, Chinchilla, Biloela, Taroom & Roma as these are the areas most affected by the Project. Further consultation will continue both in public sessions, council and with individual landowners. Most landowners that are affected by the initial part of the Project have already been contacted.

**Q: Does this letter mean Aboriginal People can claim my land?**

A: No. The Australia Pacific LNG Cultural Heritage Management Plans and the letter we have written to you are limited to the management of Aboriginal cultural heritage and do not relate to any claims by Aboriginal parties to any rights over any land.